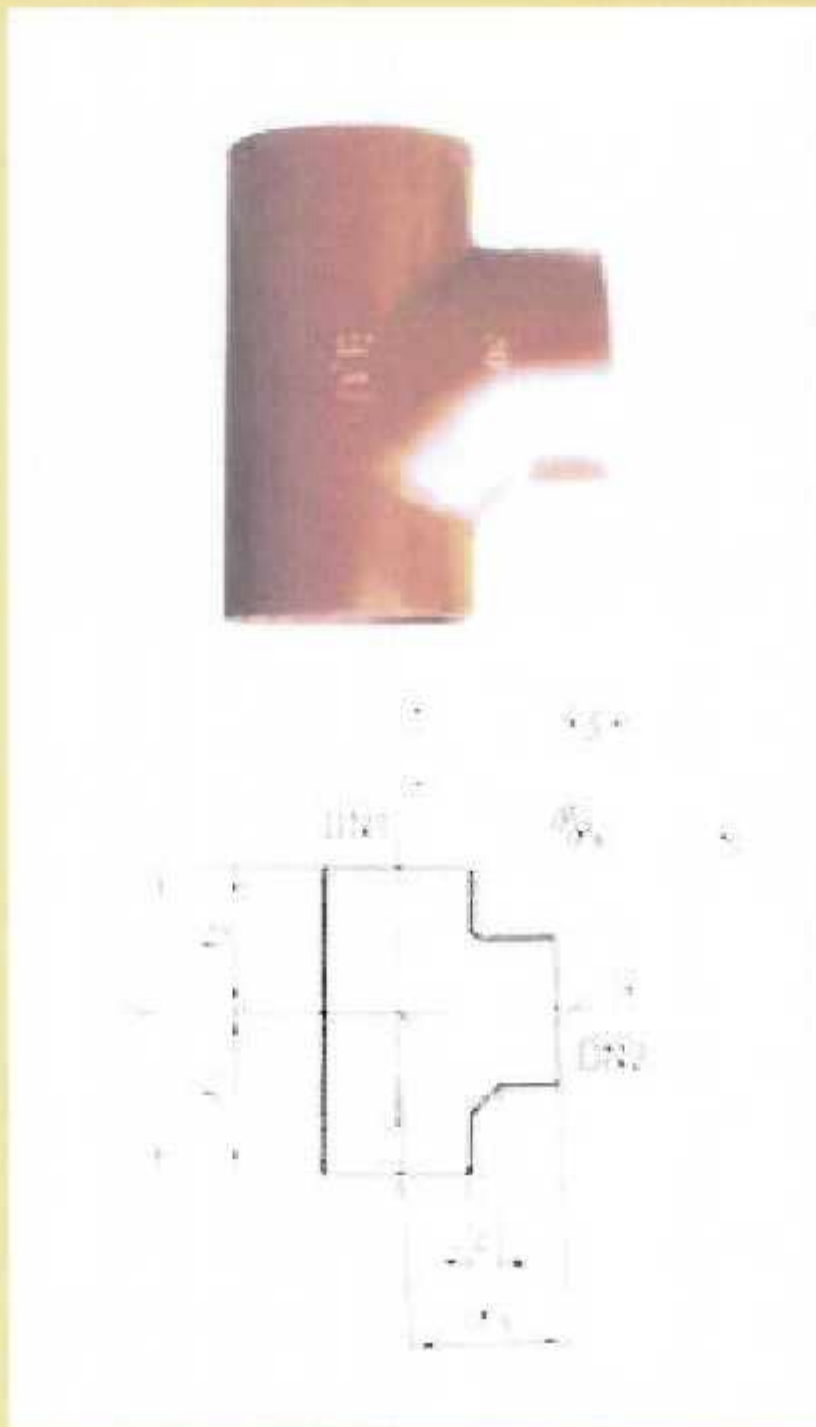


### 88° Single Branches



Size		L (mm)	X1 (mm)	X2 (mm)	X3(mm)	C (mm)	Weight
DN1	DN2						
50	50	145	79	66	80	20	0.9 kgs
70	50	155	83	72	90	21	1.4 kgs
70	70	180	97	83	95	21	1.7 kgs
75	50	180	95	85	90	22	1.6 kgs
75	75	180	95	85	95	22	1.9 kgs
100	50	170	94	76	105	22	2.1 kgs
100	70	190	102	88	110	22	2.4 kgs
100	75	200	107	95	115	22	2.6 kgs
100	100	220	115	105	120	22	2.9 kgs
125	50	180	98	82	120	22	3.0 kgs
125	70	200	107	93	125	25	3.4 kgs
125	75	205	110	95	125	25	3.6 kgs
125	100	235	125	110	130	25	4.0 kgs
125	125	260	137	123	135	25	4.6 kgs
150	50	200	100	100	140	27.5	4.4 kgs
150	70	215	115	100	140	27.5	4.8 kgs
150	100	245	130	115	145	27.5	5.5 kgs
150	125	275	147	128	150	27.5	6.2 kgs
150	150	300	158	142	155	27.5	6.9 kgs
200	100						6.9 kgs
200	150	325	173	152	185	32.5	10.8 kgs
200	200						17.2 kgs

### 88° Double Branches

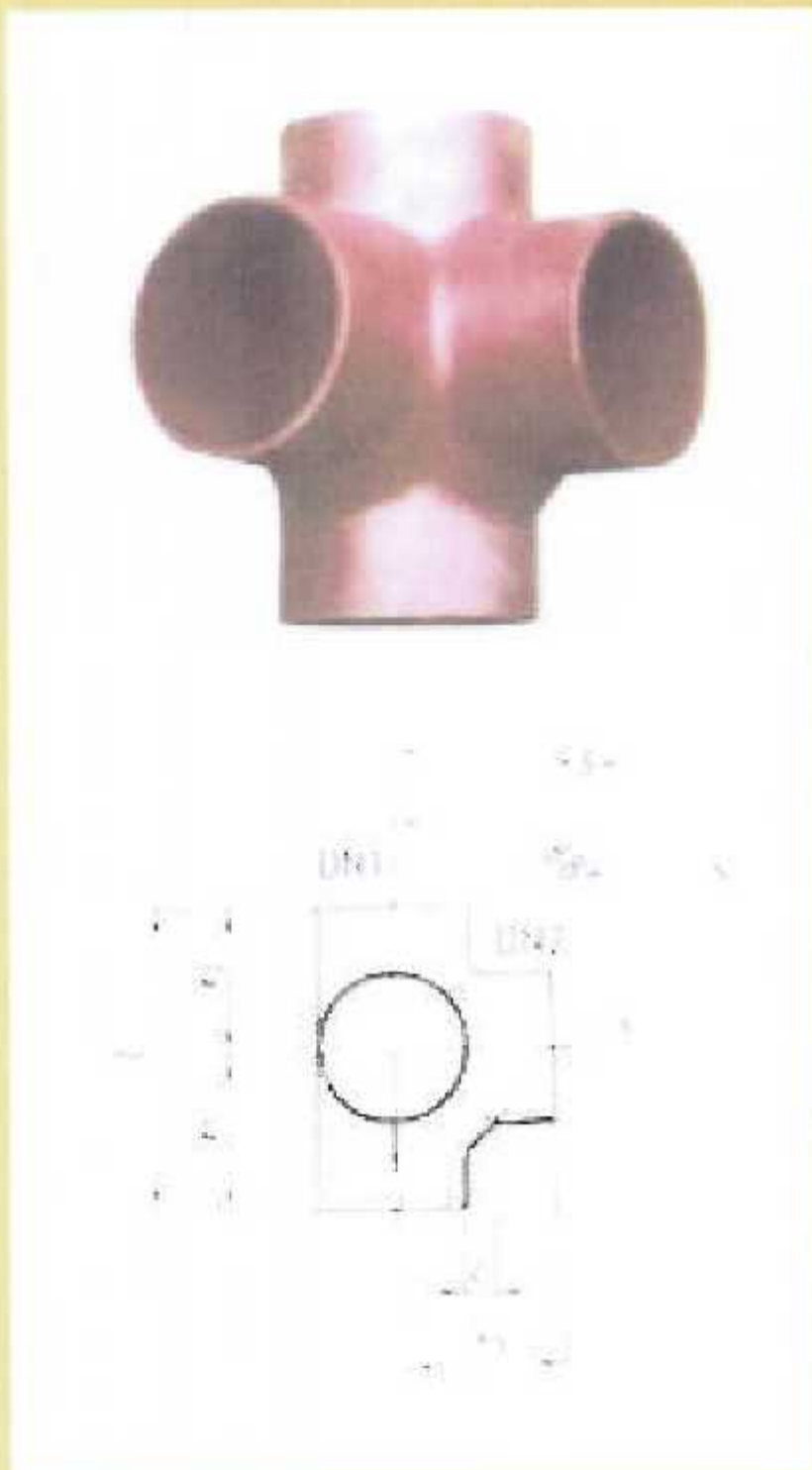


Size		L (mm)	X1 (mm)	X2 (mm)	X3(mm)	C (mm)	Weight
DN1	DN2						
100	50	180	100	80	105	22	2.2 kgs
100	70	190	102	88	110	22	2.7 kgs
100	100	230	120	110	120	22	3.2 kgs
125	100	245	130	115	135	25	
150	100	245	130	115	145	27.5	





### 45° Corner 88° Double Branches



Size		L (mm)	X1 (mm)	X2 (mm)	X3(mm)	C (mm)	Weight
DN1	DN2						
100	70	190	102	88	110	22	2.7 kgs
100	100	220	115	105	120	22	3.4 kgs
125	70	200	107	93	125	25	
125	100	235	125	110	130	25	5.0 kgs
150	100	245	130	115	145	27.5	

### Inspection with Circular Door



Size	d2	d1	H	L	Weight
DN50	53	105	35	190	2.3 kgs
DN70	73	125	45	210	2.9 kgs
DN75	78	135	90	220	3.1 kgs
DN100	104	159	61	260	5.0 kgs
DN125					10.3 kgs
DN150					14.5 kgs
DN200					22.0 kgs

### Inspection with Square Door

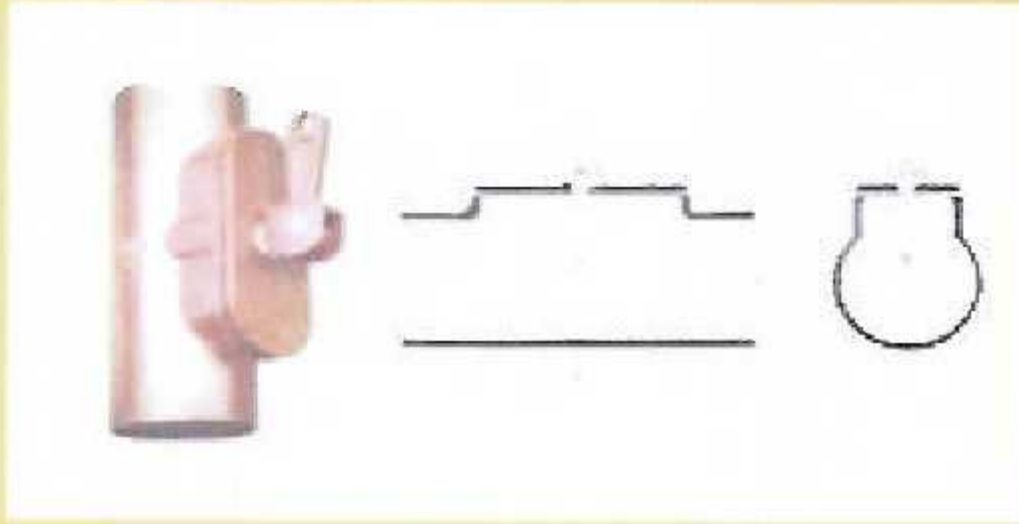


Size	A	F	G	h	L	Weight
DN100	200	230	157	60	340	7.6 kgs
DN125	225	255	190	73	370	10.3 kgs
DN150	250	280	215	85	395	14.5 kgs
DN200	300	330	265	110	465	22.0 kgs



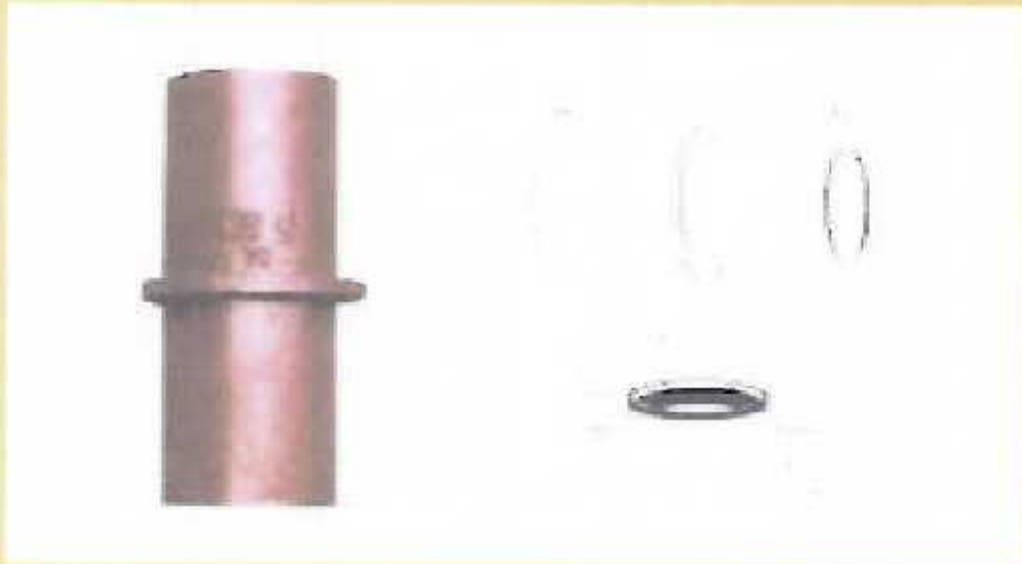


### Inspection with Manual Door



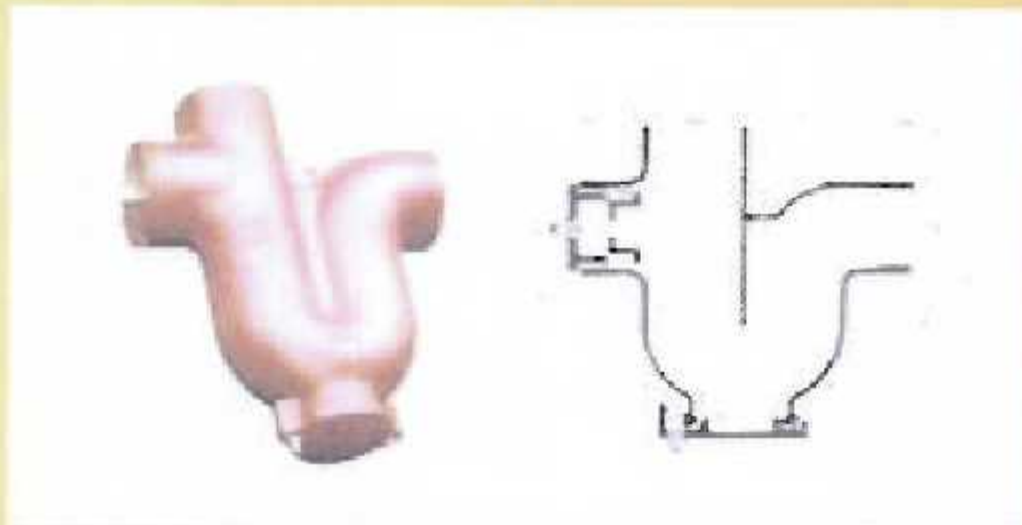
Size	C	b	a	L	Weight
DN100	170	100	250	400	8.5 kgs
DN125	180	100	250	410	10.0 kgs
DN150	190	100	250	420	12.0 kgs
DN200	215	100	250	440	

### Brackets



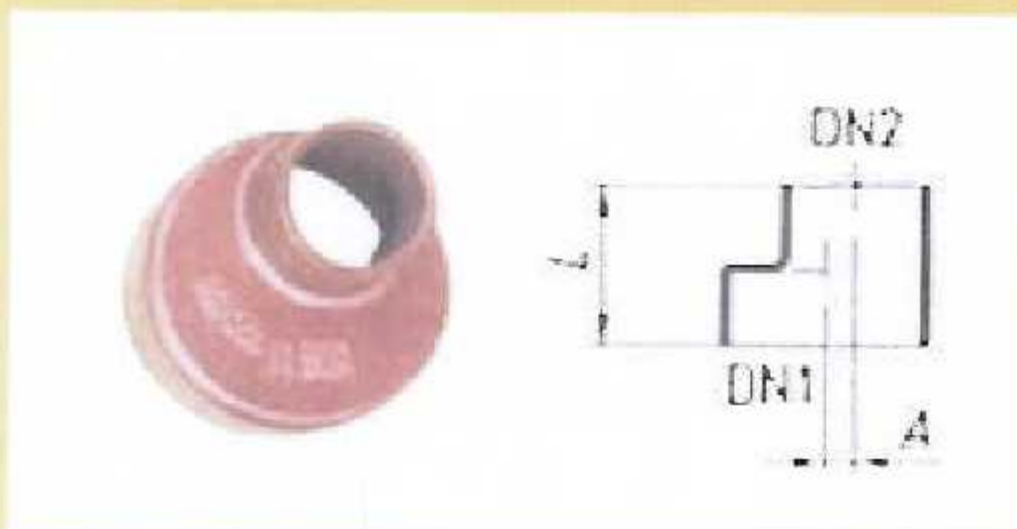
Size	L	a	b	Ø	Weight
DN50	200	193	148	92	1.3 kgs
DN70	200	214	166	115	1.6 kgs
DN75	200	214	166	120	1.6 kgs
DN100	200	250	202	148	2.3 kgs
DN125	200	275	226	174	3.0 kgs
DN150	200	301	254	200	4.0 kgs
DN200	200	360	311	253	6.0 kgs

### Traps



Size	L	H	R	h	a	Weight
DN50	190	250	60	182	68	2.8 kgs
DN70	265	293	60	200	93	5.0 kgs
DN100	325	392	100	282	110	8.5 kgs
DN125	390	446	100	316	130	13.0 kgs
DN150	470	493	100	348	145	19.5 kgs
DN200	600	600	100	420	200	

### Reducers

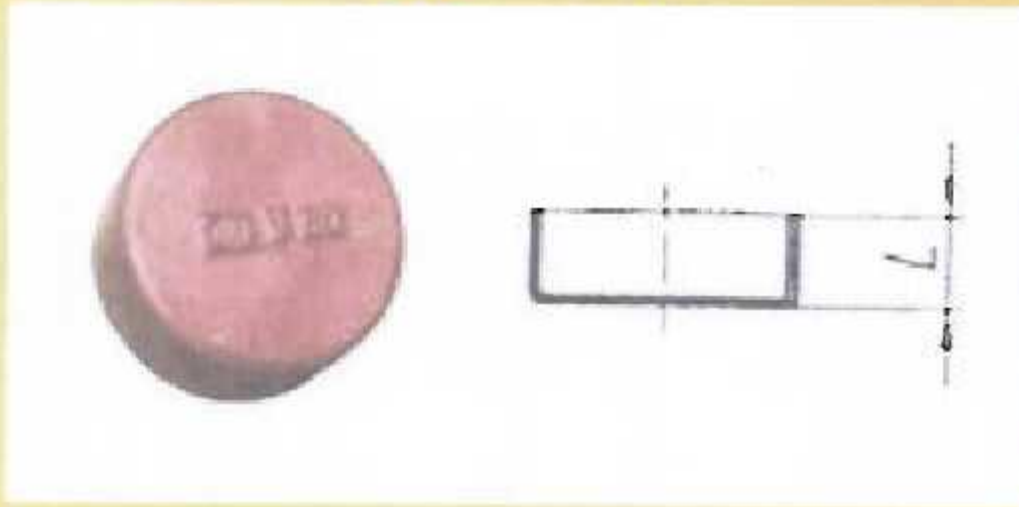


Size		A (mm)	L (mm)	Weight
DN1	DN2			
70	50	10	65	0.5 kgs
75	50	12.5	80	0.7 kgs
100	50	25	80	0.9 kgs
100	70	16	85	0.9 kgs
100	75	13.5	90	1.1 kgs
125	50	38.5	85	1.4 kgs
125	70	28.5	90	1.5 kgs
125	75	26	95	1.8 kgs
125	100	12.5	95	1.5 kgs
150	50	51	95	2.0 kgs
150	70	41	100	2.1 kgs
150	100	25	105	2.2 kgs
150	125	12.5	110	2.2 kgs
200	100	50	115	4.1 kgs
200	125	37.5	120	4.1 kgs
200	150	25	125	4.3 kgs





### Spigot Caps



Size	X	Weight
DN50	30 mm	0.2 kgs
DN70	35 mm	0.4 kgs
DN75	35 mm	0.5 kgs
DN100	40 mm	0.5 kgs
DN125	45 mm	1.1 kgs
DN150	50 mm	1.7 kgs
DN200	60 mm	3.1 kgs

### Expansion Plugs



Size	L	L1	Weight
DN50	20 mm	20 mm	0.25 kgs
DN70	28 mm	27 mm	
DN75	28 mm	27 mm	0.75 kgs
DN100	28 mm	27 mm	1.00 kgs
DN125	28 mm	27 mm	2.20 kgs
DN150	28 mm	27 mm	2.25 kgs
DN200	29 mm	30 mm	5.00 kgs





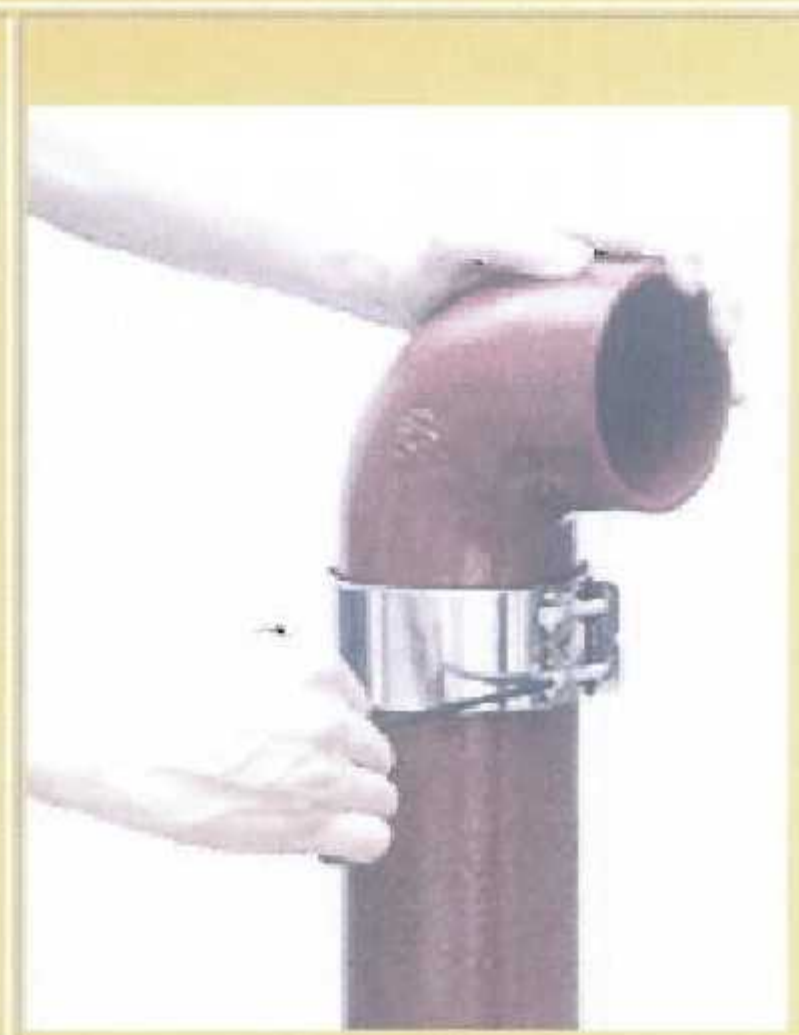
## Installation Instructions



1. Push the coupling onto the pipe or fitting until the end touches the middle ring of the rubber gasket.



2. Insert the next pipe or fitting into the coupling.



3. Tighten the screws alternatively with hexagonal screw driver, power drill or spanner.





**CAST IRON “ ORO PONTEGGIO “**

**REFERENSI PROYEK**

<b>No. PROYEK</b>	<b>LOKASI</b>	<b>KONTRAKTOR ME</b>	<b>TAHUN</b>
<b><u>Proyek yang memakai produk cip ORO PONTEGGIO</u></b>			
1. Grand Panghegar	Bandung	Plameka Jayaasri Star Delta Utama Indah Yama Mitra	2009/2010 2009/2010 2010
2. Hotel Luwansa	Palangkaraya	Dian Sarana ,Surabaya	2010
3. Jakarta Garden City	Jakarta	Arsimekon	2010
4. Paradiso Apartement	Jakarta	Wahyu Delta	2010
5. RSUB Adam Malik	Medan	Indo Jaya	2010-2011
6. Univ. Indonesia	Jakarta	Indo Jaya	2010-2011
7. The Wave	Jakarta	PP	2011
8. Hotel Majapahit	Surabaya	Mega Persada Ind.	2011
9. Pasar Baroe Mansion	Jakarta	Wahyu Delta Pratama	2011/2012
10. Paramount Residences	Gading Serpong	PT Vastorindo	2012
11. RS Betsaidha	Gading Serpong	Wika Gedung	2012
12. Hotel Luwansa	Jakarta	KKS	2012
13. Sunter Icon	Jakarta	PT .Wahyu Delta	2012
14. Best Western Hotel Hariston Jakarta		PT Wahyu Delta	2012
15. Hypermart Bali	Bali	PT Cahaya Abadi Lestari	2012
16. Hypermart Madura	Madura	PT Cahaya Abadi Lestari	2012





17. Botanica	Jakarta	PT Indoartha	2012-2013
18. Silk Wood Alam Sutra	Jakarta	PT Totalindo	2012-2013
19. Sky Terrace	Jakarta	PT Wahyu Delta	2013
20. BSD Green View	Jakarta	PT Sumber Jayatama	2013
21. Hotel Millnium	Jakarta	CV. Asahan Maju	2013
22. Cityloft Glodok	Jakarta	PT Sumber Jayatama	2013
23. Woodland Kalibata	Jakarta	PT Calrindo Djaya	2013
24. The Life Tower	Jakarta	PT PP	2013
25. Centinial Tower	Jakarta	PT Indoartha Surya	2013
26. Newton Buah Batu	Bandung	PT Djasa Ubersakti	2014
27. Hotel Alila	Jakarta	PT Hutama Karya	2014
28. Atrium Senen	Jakarta	PT Anugerah Mega Abadi	2014
29. Anabatic	Jakarta	PT Catur Bangun Mandiri	2014
30. Ciputra World	Jakarta	PT Barito & PT Sukma	2014
31. Vida View	Makassar	PT Nusa Indah Teknik	2014
32. GTU Izzara	Jakarta	PT Clarindo Djaya Perkasa	2014
33. Ibis Harmoni	Jakarta	PT Clarindo Djaya Perkasa	2015
34. Universitas Podomoro	Jakarta	PT Kuat Andal Nan Gemilang	2015

**Proyek yang menggunakan ORO PONTEGGIO :**

1. Grand Indonesia	Jakarta	PT. Grand Indonesia	2009-2010
2. Hotel Mandarin	Jakarta	PT. Pradiptaya	2009
3. Bakrie Tower	Jakarta	PT. Vastorindo	2009-2010



4. RS Siloam	Jakarta	PT. Iskaba	2010
5. Paragon hotel	Semarang	PT. Sinar Arta Mulia	2010





